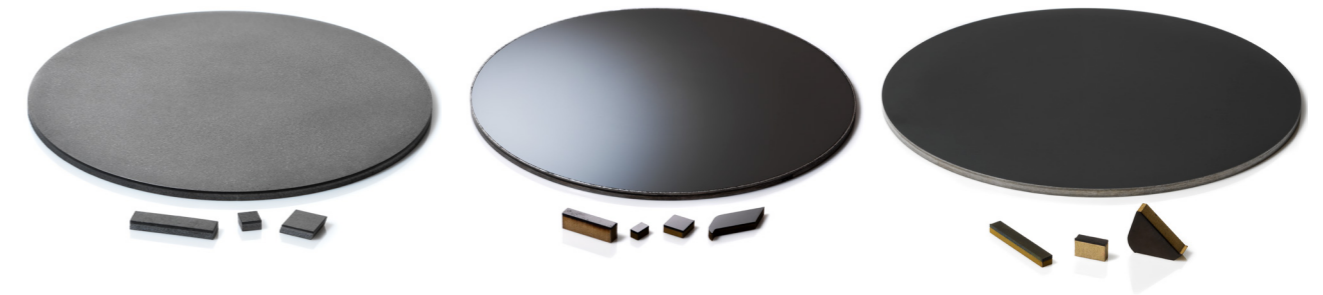


Our PCD portfolio

Providing toolmakers with cost-competitiveness and the ability to stand out

	Premium			Assured	
	CTC002 / CTB004	CTB010	CTH025 / CTM302	ATB010	ATH025
Target applications & workpiece material	Any type of application requiring high impact and chip resistance	All types of applications in all type of workpiece material	Any type of application in abrasive intensive workpiece materials (e.g. laminates) Avoid chipping / impact intensive workpiece materials	All types of applications in all types of workpiece material except for where polished surface is required (e.g. resinous materials and certain laminates)	Any type of application in abrasive intensive workpiece materials except for where polished surface is required Avoid chipping / impact intensive workpiece materials
Product purpose	Effective in high impact applications Ideal for hardwood laminates & chipboard	The industry benchmark product recognised globally by tool makers and end-users Leading quality and general purpose performance Available in wide range of variations Best option for customers new to PCD	Effective in abrasive intensive applications Ideal for tough laminates and cement board	Reliable performance	Assured quality for value focused applications



Product	Disc size		Surface finish		Total thickness (+/- 0.1mm)			PCD thickness (+/- 0.15mm)	
	Ave PCD grain size (μ)	Usable area	Polished	Lapped	1.6mm	2.0mm	3.2mm	0.3mm	0.5mm
CTC002	2	74	✓	✓	✓	✓	✓		✓
CTB004	4	74	✓	✓	✓	✓			✓
CTB010	10	74	✓	✓	✓	✓	✓	✓	✓
CTH025	25	74	✓	✓	✓	✓	✓		✓
CTM302	30 & 2	74	✓	✓	✓	✓	✓		✓

Product	Disc size		Surface finish		Total thickness (+/- 0.15mm)			PCD thickness (+/- 0.2mm)	
	Ave PCD grain size (μ)	Usable area	Polished	Lapped	1.6mm	2.0mm	3.2mm	0.3mm	0.5mm
ATB010	10	74		✓	✓	✓			✓
ATH025	25	74		✓	✓	✓			✓

如果您想了解更多关于元素六中国区的信息，请访问 www.winkingtec.com，或联系如下地址：

CHANGZHOU WINKING IMPORT AND EXPORT CORP LTD. 常州市盛尔凯进出口有限公司

公司地址：常州市恒生科技园41-1号

邮编：213000

电话：0519-89885387 13515251099

电子邮件：David@winkingtec.com